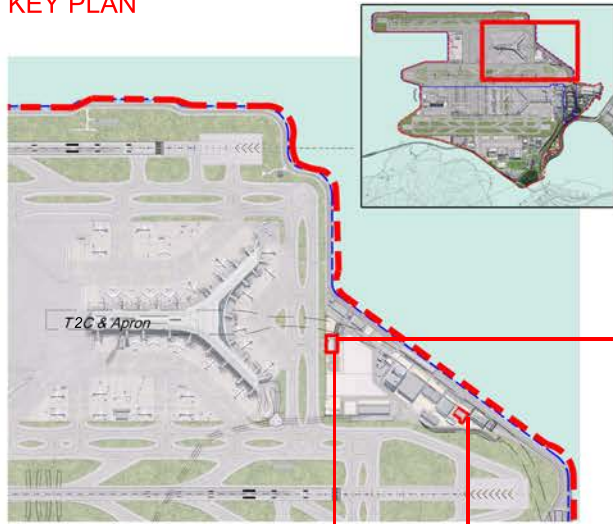


KEY PLAN



Airside Fire Station -Side view

OM2, OM3, OM4



Airside Fire Station

OM2, OM3, OM4



Landside Fire Station

Figure 3.5.1

EXPANSION OF HONG KONG INTERNATIONAL AIRPORT INTO THREE RUNWAY SYSTEM -
LANDSCAPE AND VISUAL PLAN
CONDITION 2.18 OF ENVIRONMENTAL PERMIT (EP-489/2014)
RECOMMENDED LANDSCAPE AND VISUAL MITIGATION MEASURES FOR ANCILLARY BUILDINGS

File:
Date: 24 October 2022

Environmental
Resources
Management



KEY PLAN

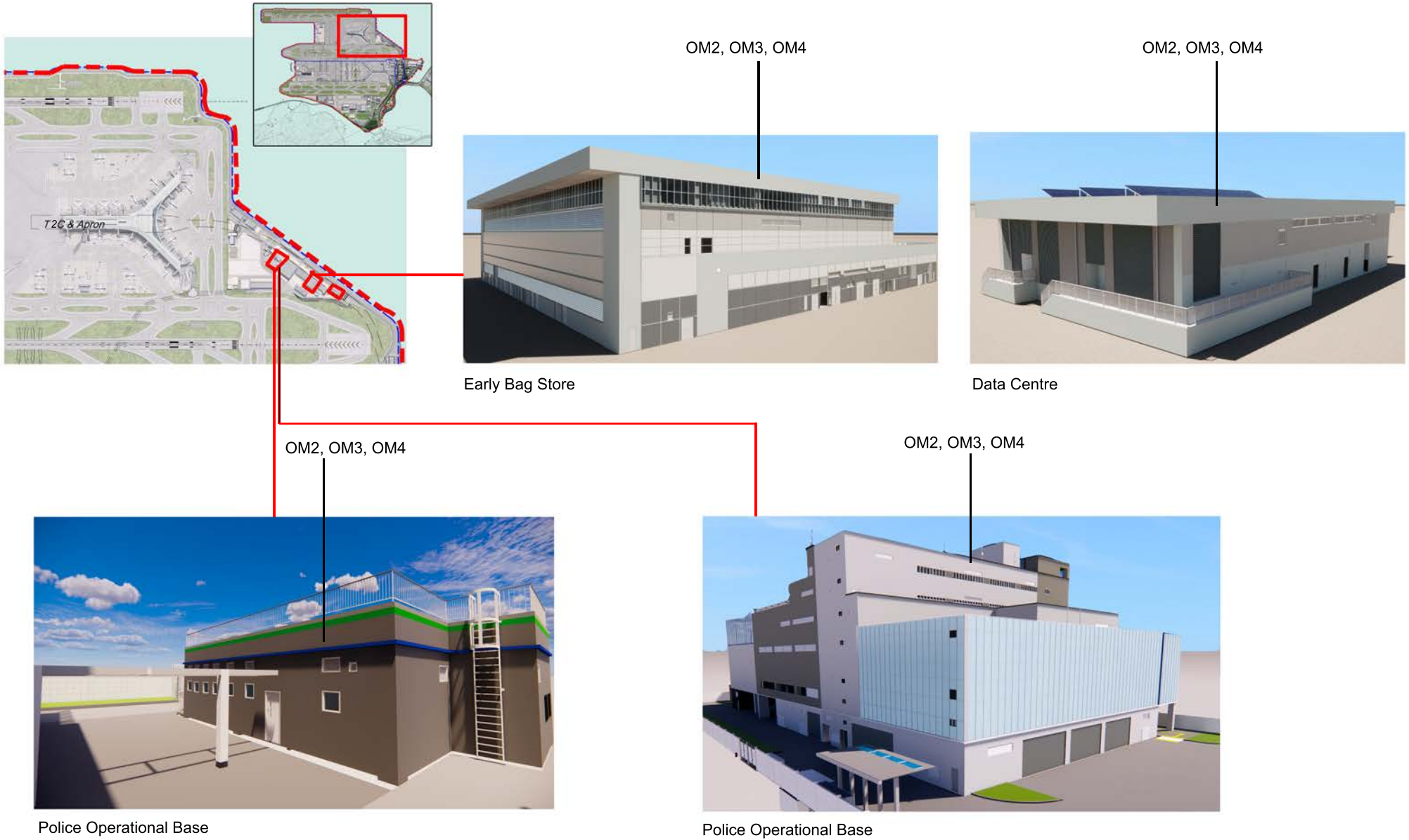
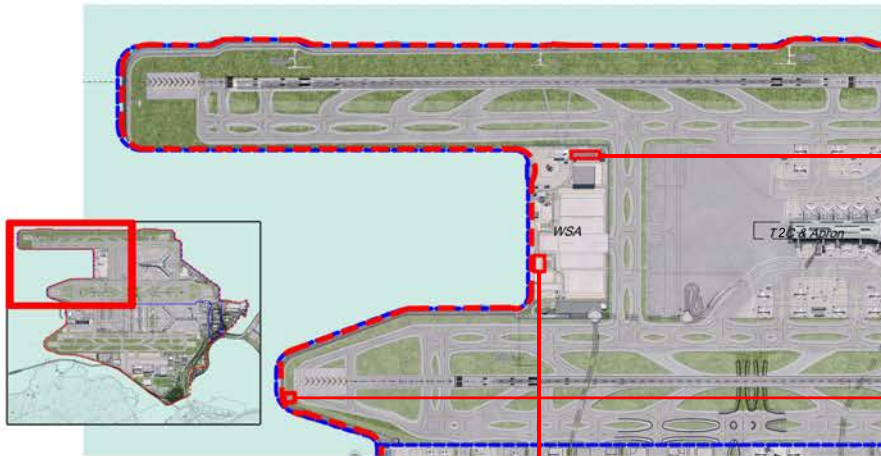


Figure 3.5.2

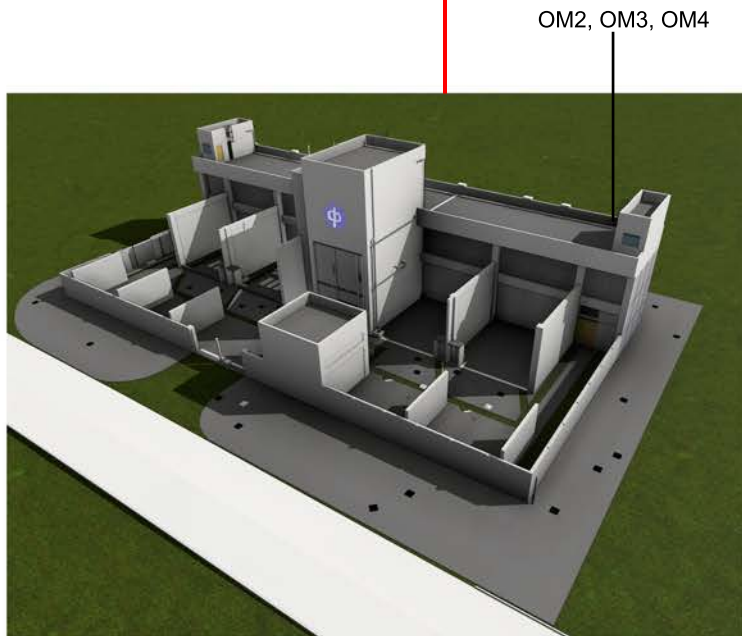
EXPANSION OF HONG KONG INTERNATIONAL AIRPORT INTO THREE RUNWAY SYSTEM -
 LANDSCAPE AND VISUAL PLAN
 CONDITION 2.18 OF ENVIRONMENTAL PERMIT (EP-489/2014)
RECOMMENDED LANDSCAPE AND VISUAL MITIGATION MEASURES FOR ANCILLARY BUILDINGS

File:
 Date: 24 October 2022

KEY PLAN



ARE Store and Forecourt Observation Facility



Airport West Third Runway Substation



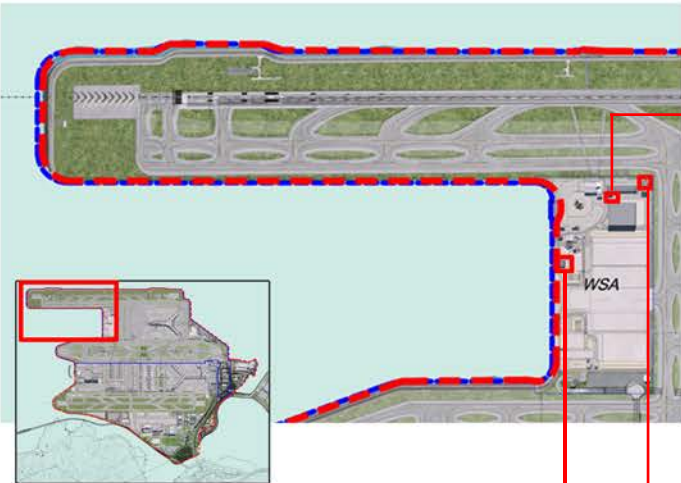
CAD Localizer Equipment Building and Police Equipment Room

Figure 3.5.3

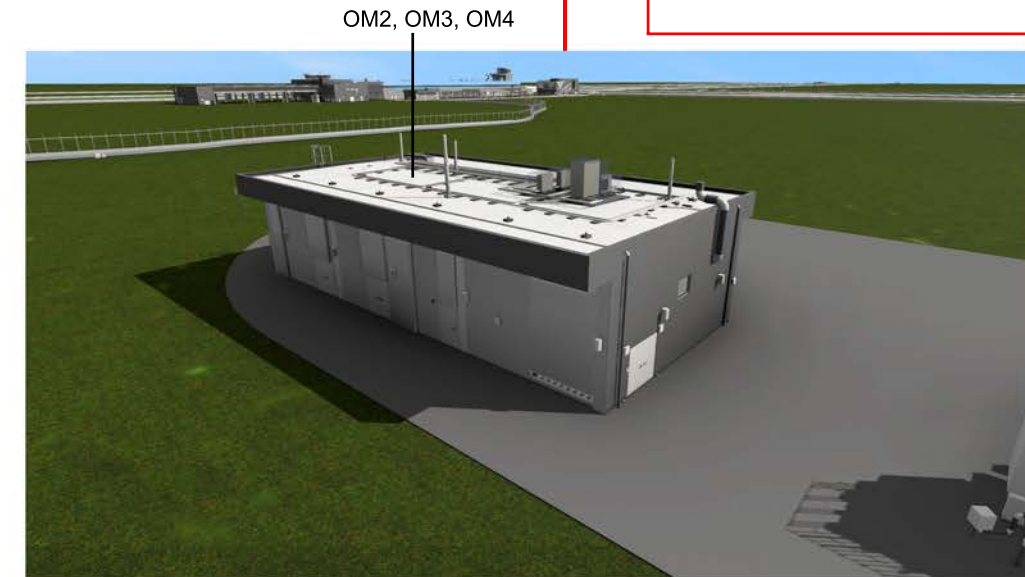
EXPANSION OF HONG KONG INTERNATIONAL AIRPORT INTO THREE RUNWAY SYSTEM -
 LANDSCAPE AND VISUAL PLAN
 CONDITION 2.18 OF ENVIRONMENTAL PERMIT (EP-489/2014)
RECOMMENDED LANDSCAPE AND VISUAL MITIGATION MEASURES FOR ANCILLARY BUILDINGS

File:
 Date: 24 October 2022

KEY PLAN



Communications Equipment Building C



Electrical Substation



AGL Vault

Figure 3.5.4

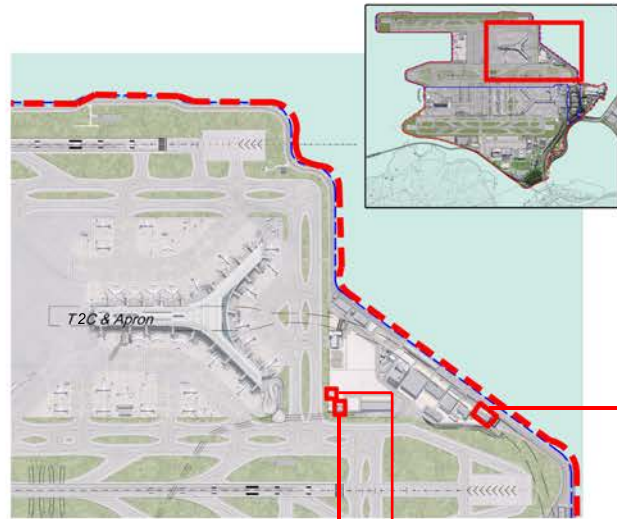
EXPANSION OF HONG KONG INTERNATIONAL AIRPORT INTO THREE RUNWAY SYSTEM -
LANDSCAPE AND VISUAL PLAN
CONDITION 2.18 OF ENVIRONMENTAL PERMIT (EP-489/2014)
RECOMMENDED LANDSCAPE AND VISUAL MITIGATION MEASURES FOR ANCILLARY BUILDINGS

File:
Date: 24 October 2022

**Environmental
Resources
Management**



KEY PLAN



APM BHS Tunnel Vent Building



C&ED Operational Office and Kennel Area



GSE Vehicle Wash Facility

Figure 3.5.5

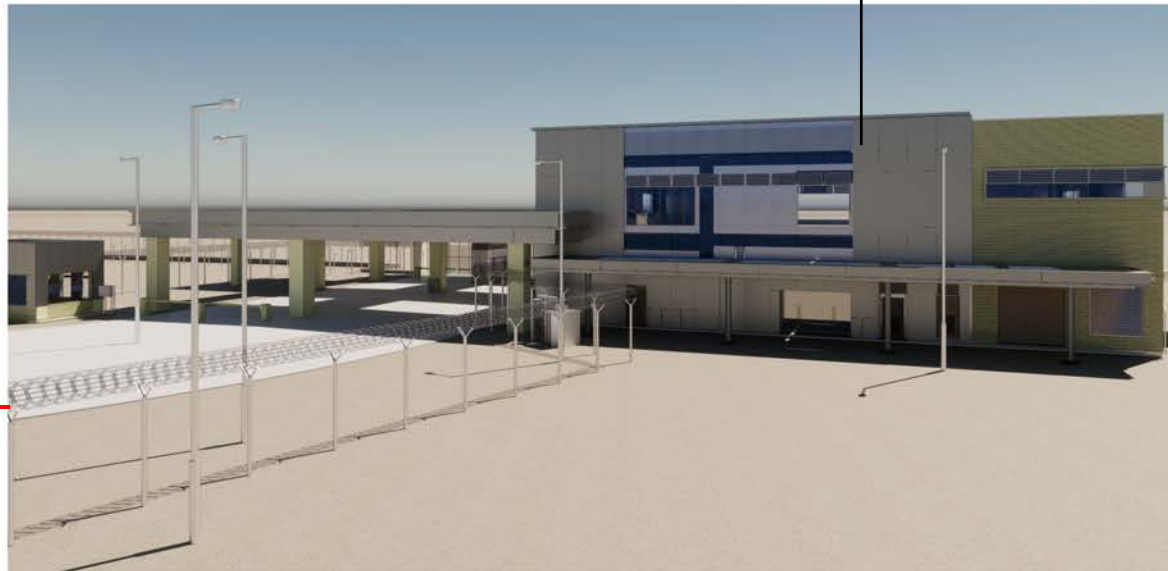
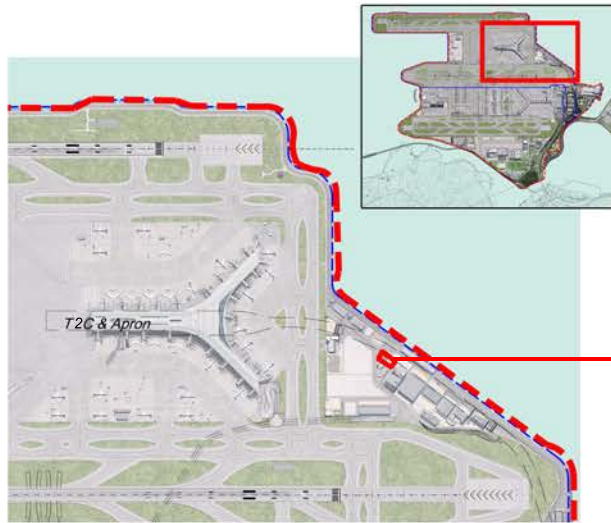
EXPANSION OF HONG KONG INTERNATIONAL AIRPORT INTO THREE RUNWAY SYSTEM -
LANDSCAPE AND VISUAL PLAN
CONDITION 2.18 OF ENVIRONMENTAL PERMIT (EP-489/2014)
RECOMMENDED LANDSCAPE AND VISUAL MITIGATION MEASURES FOR ANCILLARY BUILDINGS

File:
Date: 24 October 2022

**Environmental
Resources
Management**



KEY PLAN



Security Gatehouse View 1

OM2, OM3, OM4



Security Gatehouse View 2

OM2, OM3, OM4



Security Gatehouse View 3

Figure 3.5.6

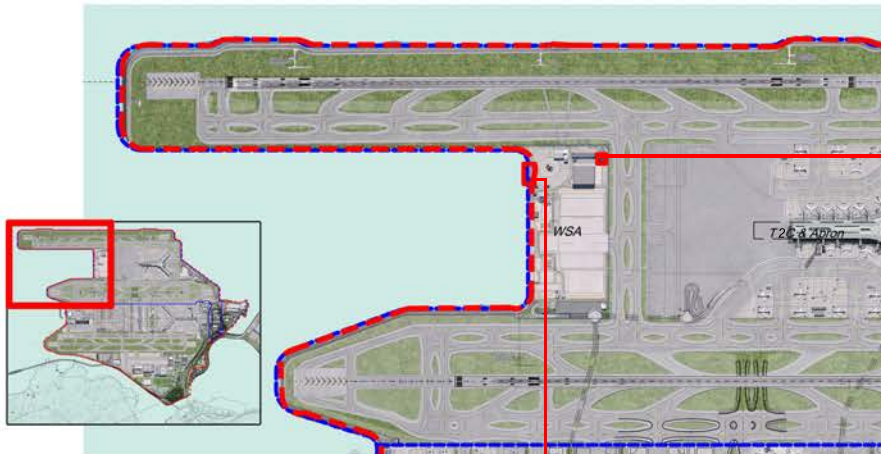
EXPANSION OF HONG KONG INTERNATIONAL AIRPORT INTO THREE RUNWAY SYSTEM -
LANDSCAPE AND VISUAL PLAN
CONDITION 2.18 OF ENVIRONMENTAL PERMIT (EP-489/2014)
RECOMMENDED LANDSCAPE AND VISUAL MITIGATION MEASURES FOR ANCILLARY BUILDINGS

File:
Date: 24 October 2022

**Environmental
Resources
Management**



KEY PLAN



OM2, OM3, OM4



AFC Decontamination Facilities

OM2, OM3, OM4



West Boat Point and Launching Facility

Figure 3.5.7

EXPANSION OF HONG KONG INTERNATIONAL AIRPORT INTO THREE RUNWAY SYSTEM -
LANDSCAPE AND VISUAL PLAN
CONDITION 2.18 OF ENVIRONMENTAL PERMIT (EP-489/2014)
RECOMMENDED LANDSCAPE AND VISUAL MITIGATION MEASURES FOR ANCILLARY BUILDINGS

File:
Date: 24 October 2022

Environmental
Resources
Management

